

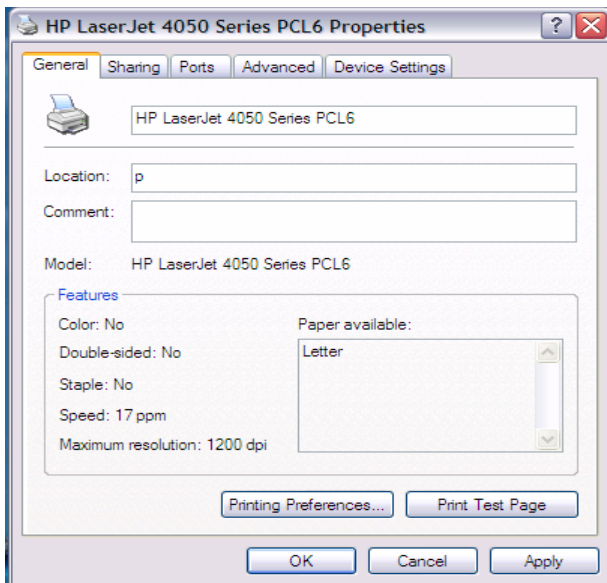
Printer Configuration

HP 4000/4050/4100/4150 tn

Step #1: Check your printer driver.

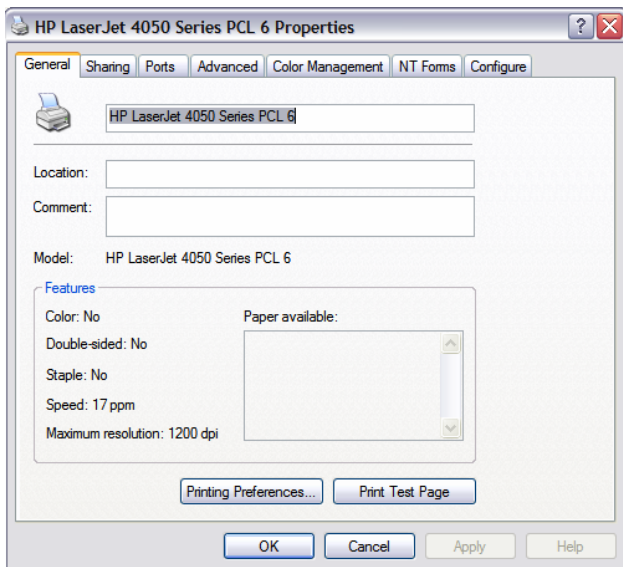
The printer driver that ships with Windows XP does not support tray 3.

Right click on the icon for HP 4050



This printer driver is BAD. It will not support the third tray. You will not be successful with this driver.

NOTE: This is what you see clicking on the Printer Icon. Do NOT confuse this with the screen that comes up when you select the printer tray.



THIS DRIVER IS GOOD. IF YOU SEE THIS DRIVER SKIP TO STEP #3.

Step #2: Download the correct driver from WWW.HP.COM

Support & Drivers

Support for your products:

Select a task and enter a product name/number:

- Download drivers and software
- See support and troubleshooting information

for product: >>

e.g. Pavilion 7955, LaserJet 1100 or C4224A
» How do I find my product name/number

Mark Download Drivers and Software

Enter hp4050tn

specify operating system - HP LaserJet 4050tn Printer



my list of products:
» choose another product and add it to my list
» remove this product from my list

▼

By downloading, you agree to the terms and conditions of the [HP Software License Agreement](#)

subscribe to driver and support alerts

language >>

select operating system

- » Mac OS 8
- » Mac OS 9
- » Mac OS X
- » Microsoft MS-DOS
- » Microsoft Windows 2000
- » Microsoft Windows 3.1
- » Microsoft Windows 3.11
- » Microsoft Windows 95
- » Microsoft Windows 98
- » Microsoft Windows ME
- » Microsoft Windows NT 3.51

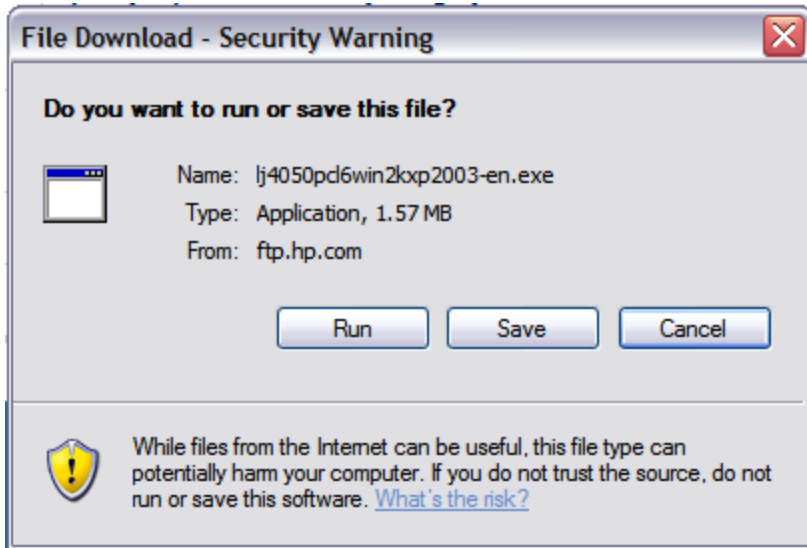
Find and click on your operating system.

Driver

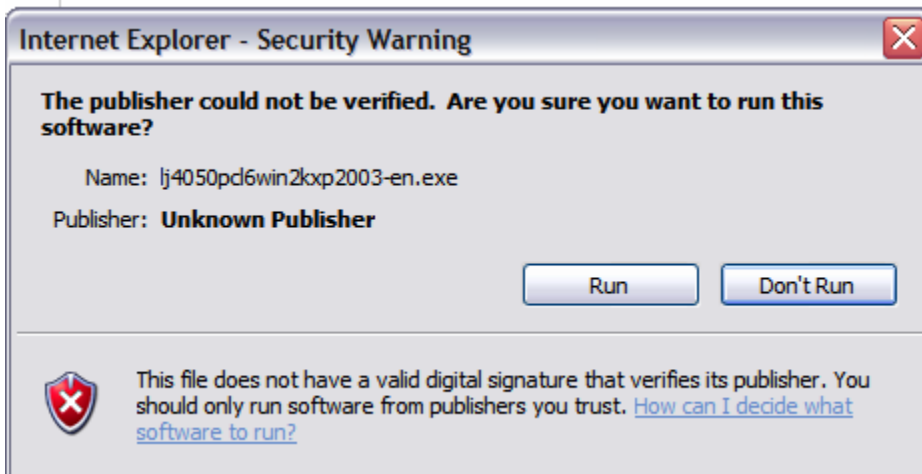
description		rev	size	
Printer Status/Alerts and Intern enabled supplies ordering (IESO)/SureSupply for Direct Connect		3.1	6.3 MB	download >>
Screen Reader Accessibility for Status and Alerts	30 Jul 2003	3.1	6.3 MB	download >>
HP LaserJet 4050 PCL 5e Printer Driver	12 Dec 2003	4.27.4050.410	1.6 MB	download >>
hp LaserJet 4050 PCL 6 printer driver	12 Dec 2003	4.27.4050.410	1.6 MB	download >>

Hp LaserJet
4050 PCL 6
Printer Driver

Mobile Printing

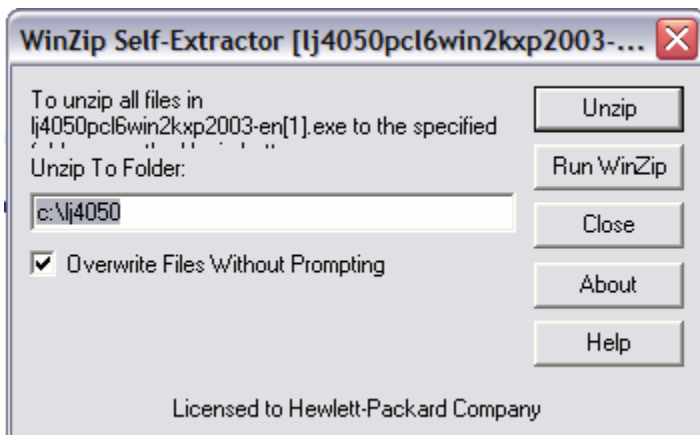


Click on RUN



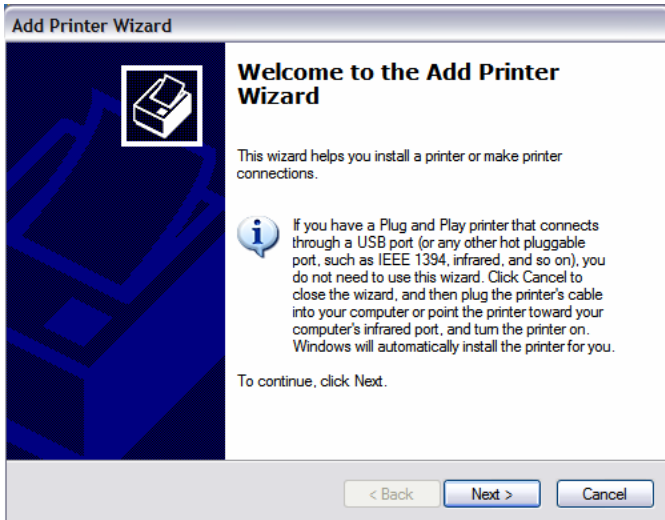
Ignore this warning

Click on RUN

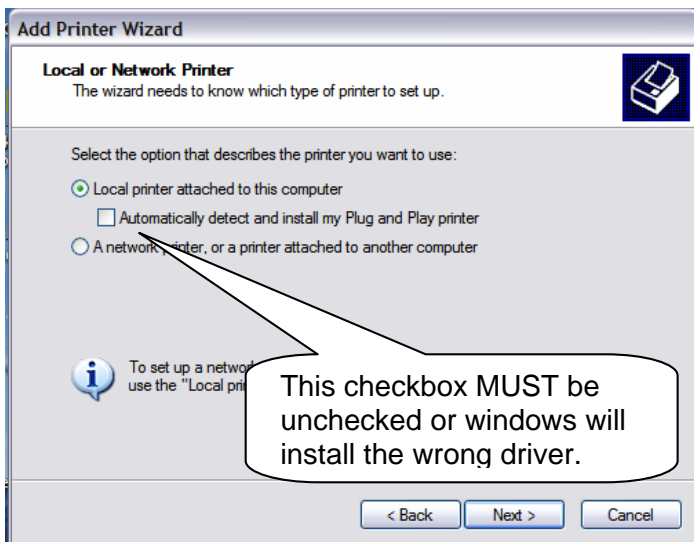


The default location c:\lj4050 is a good location. Just click on UnZip

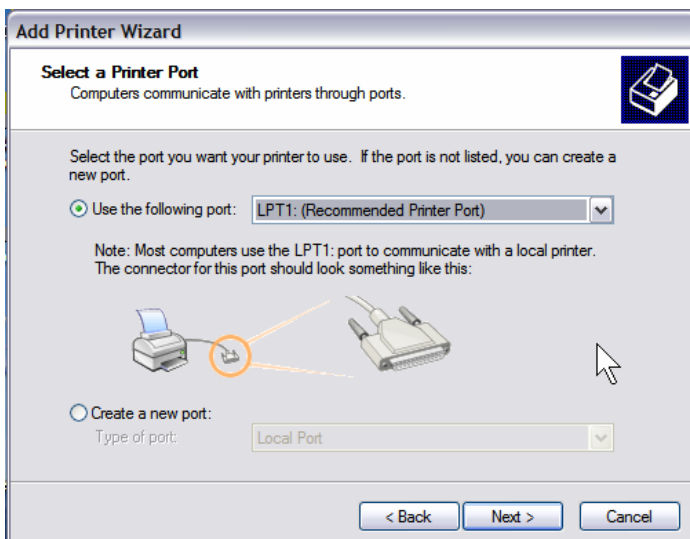
Delete the old HP4050 from the list of printers and install a new one



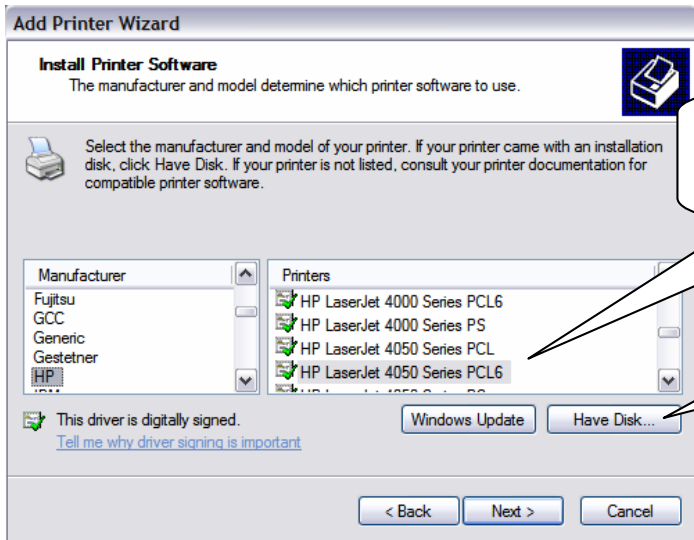
Click on Next



DO NOT CHECK "Automatically detect"

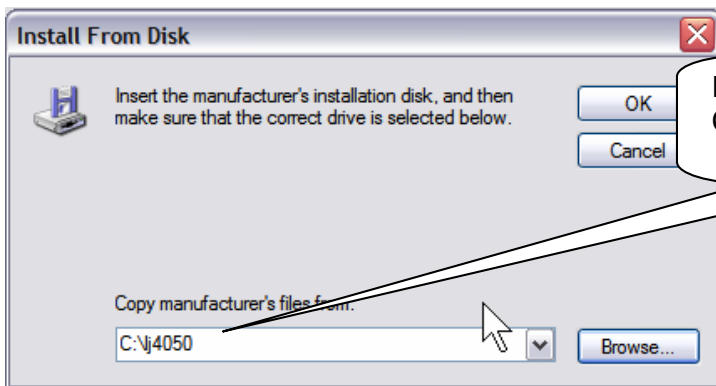


If they are using a direct, parallel cable just click Next.

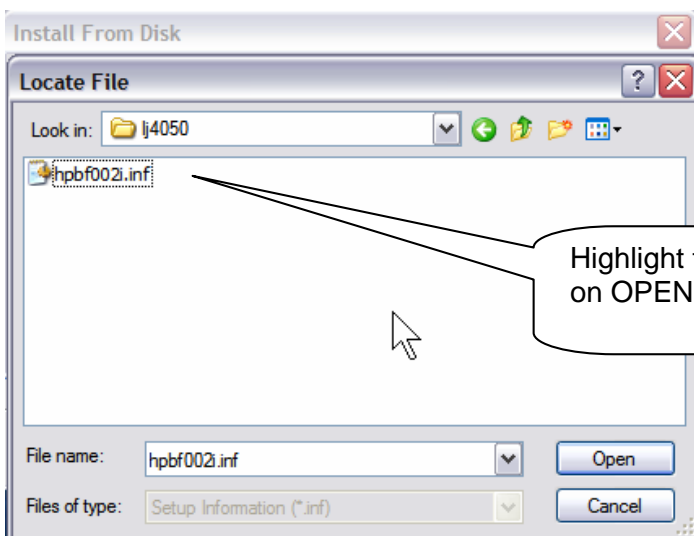


Do NOT select any from this list THEY WILL NOT WORK.

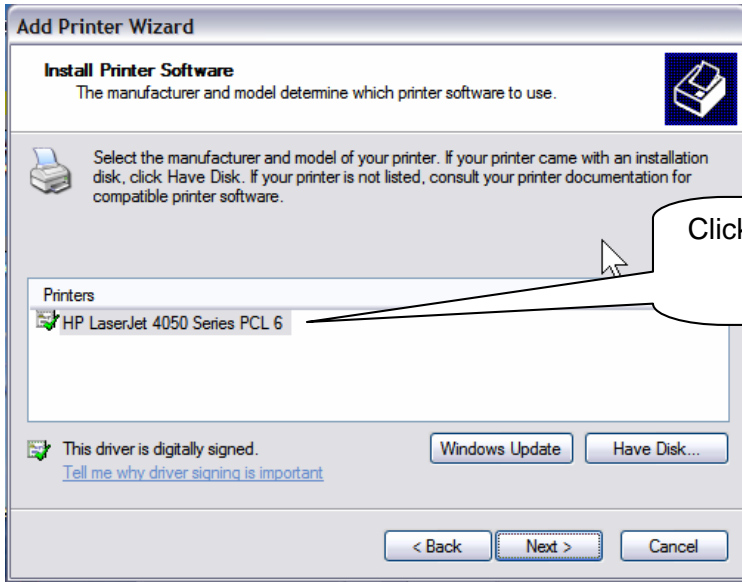
Click on HAVE DISK.



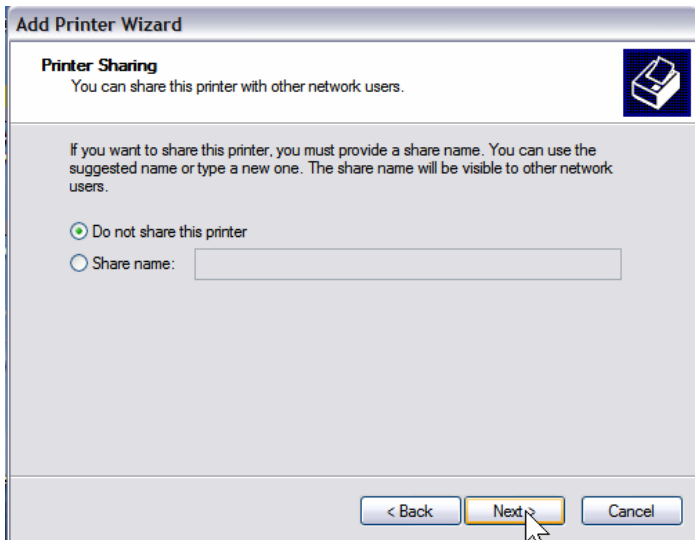
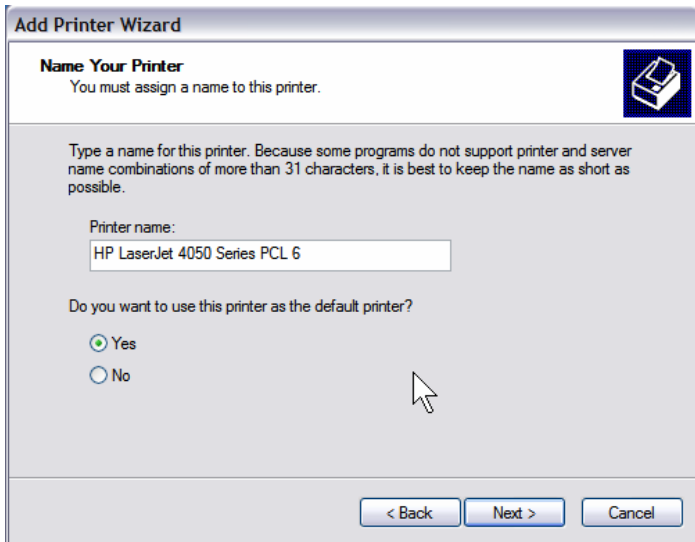
Enter C:\lj4050



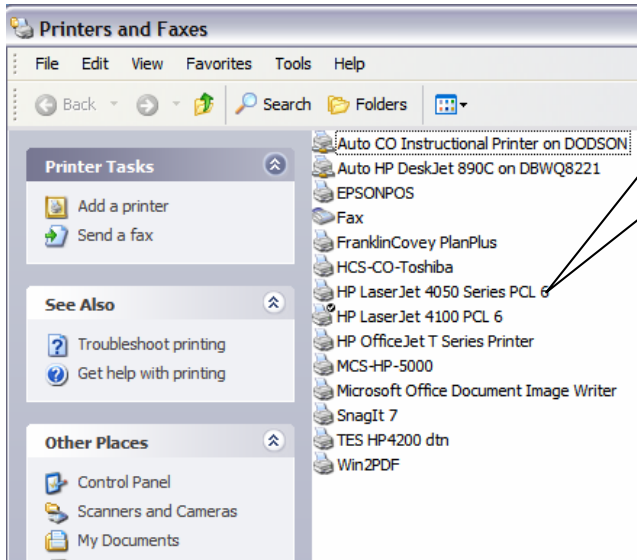
Highlight this INF file and click on OPEN



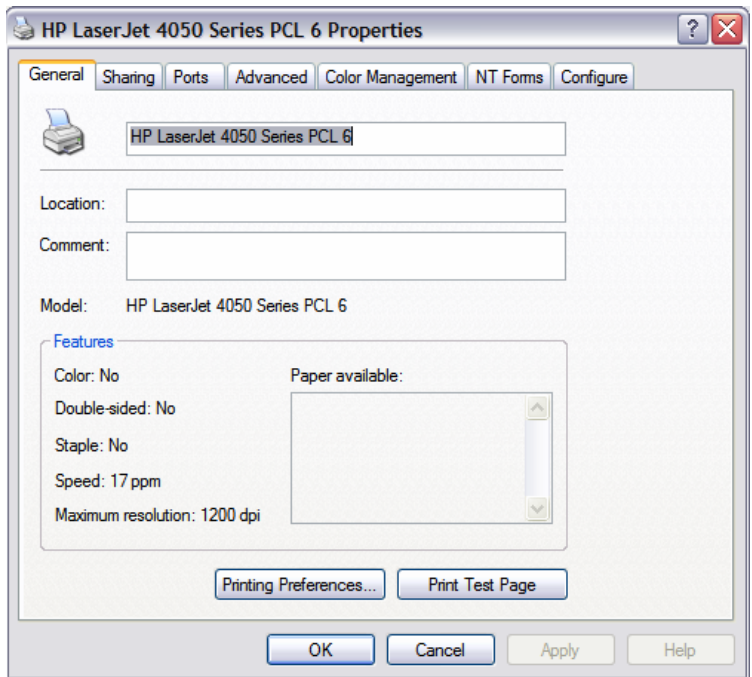
Click on this one



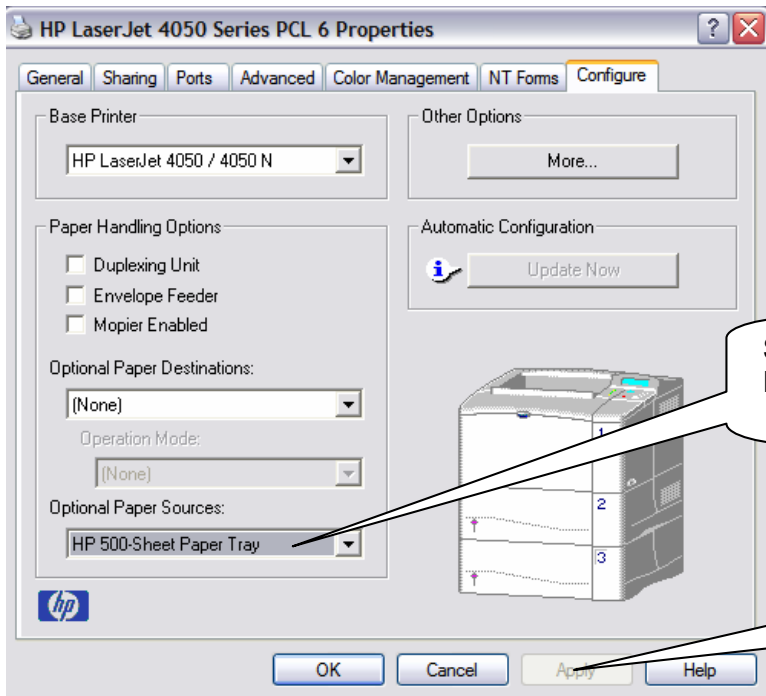
I recommend that you DO NOT share the finance printer.



Right click on the printer you just installed and look at Properties.



YEA – We have the right printer driver.



Click on the CONFIGURE tab

Select the HP 500 Sheet Paper Tray

Be sure and click APPLY

Step #3: Configure the printer:

Using the menu options on the printer make the following settings:

Resets Menu

Restore Factory Settings

Tray 1

Cassette

Tray 1 Type

Letterhead

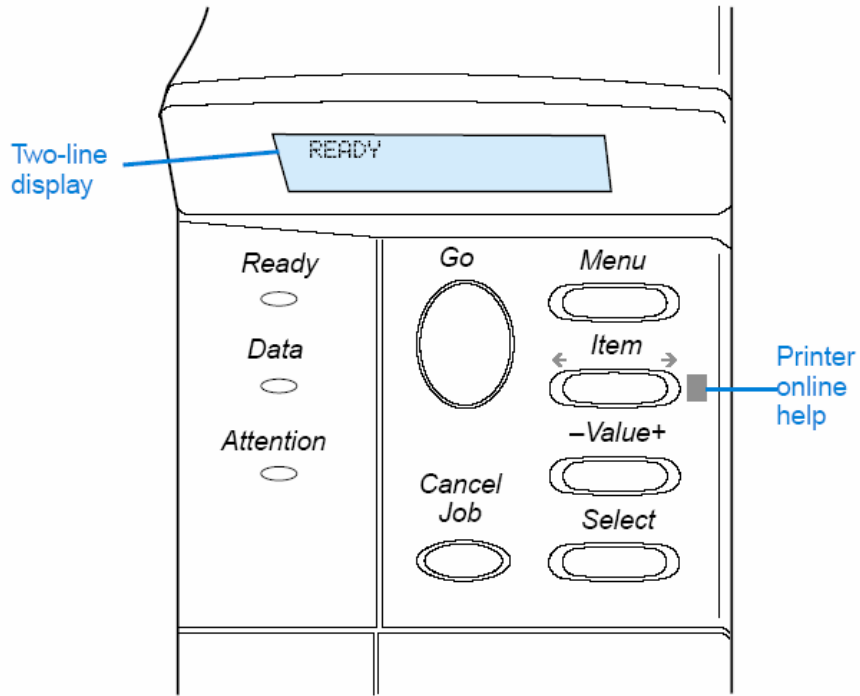
Tray 2 Type

Plain

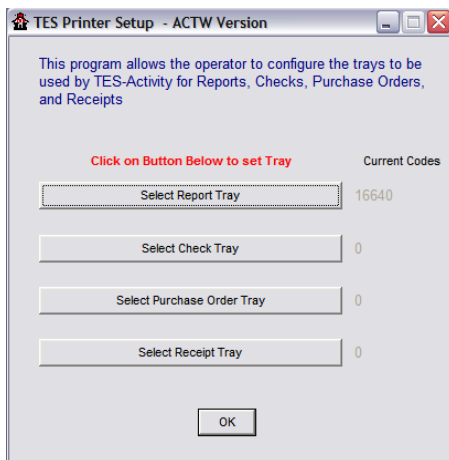
Tray 3 Type

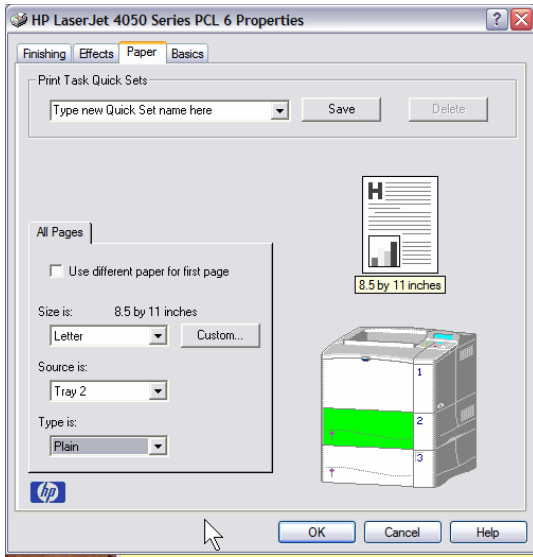
Preprinted

HP 4000 – 4150 Control Panel



Step #4: Configure TES



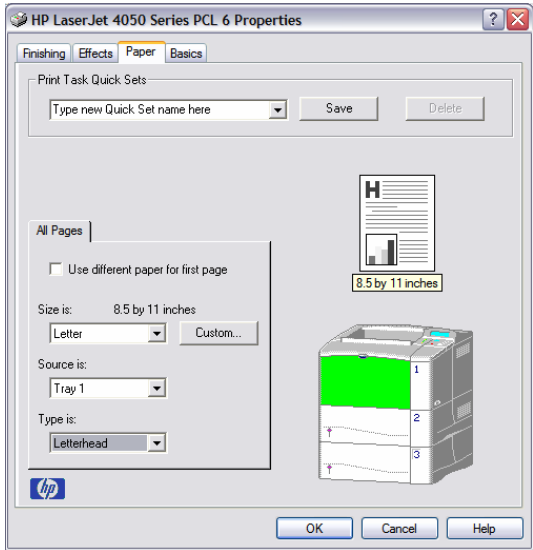


TES REPORTS

Size is LETTER

Source is TRAY 2

Type is PLAIN

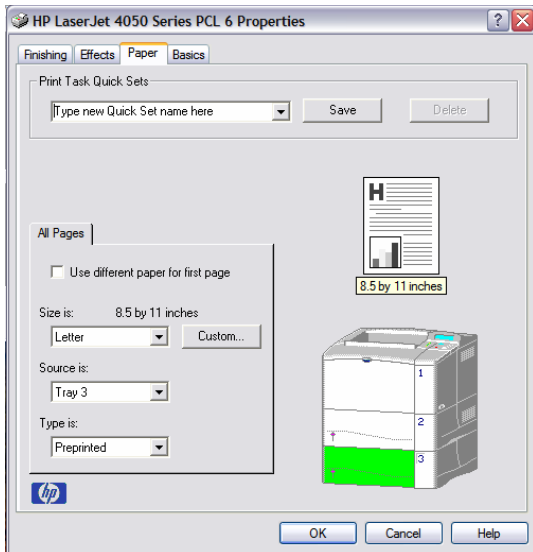


TES CHECKS

Size is LETTER

Source is TRAY 1

Type is LETTERHEAD

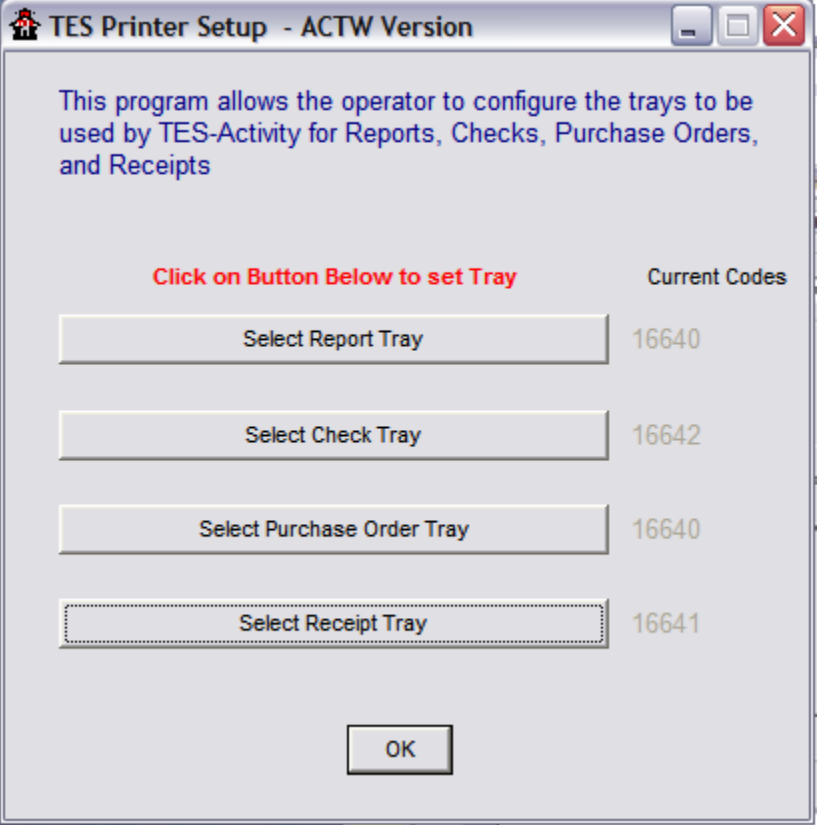


TES RECEIPTS

Size is LETTER

Source is TRAY 3

Type is Preprinted

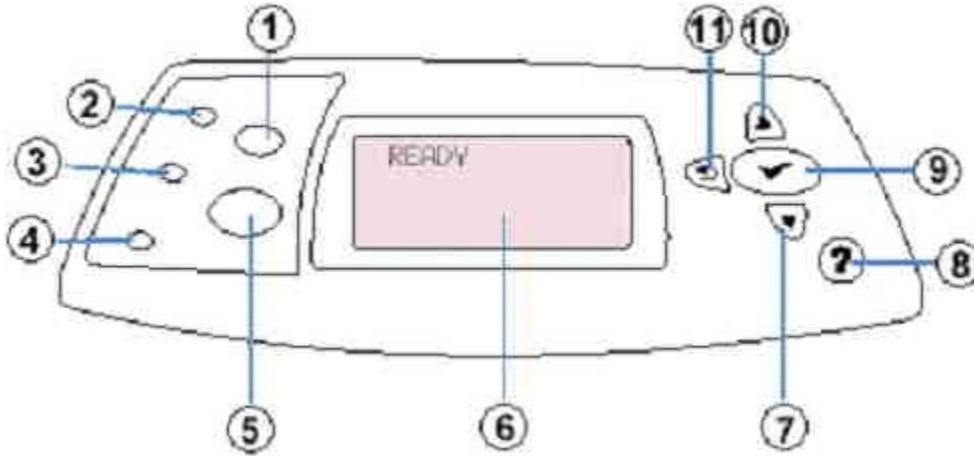


HP 4200 Control Panel

Introduction

This document describes the functions and features of the control panel lights and buttons. Also listed are procedures for changing control panel settings, using the help file, and printing a control panel menu map.

Figure 1: Control panel layout








- 1 - Cancel Job button
- 2 - Ready light
- 3 - Data light
- 4 - Attention light
- 5 - Pause/Resume button
- 6 - Control panel display
- 7 - Down Arrow button
- 8 - Help button
- 9 - Select button
- 10 - Up Arrow button
- 11 - Back Arrow button

Control panel lights

Light	Indication when lit
Ready	The printer is ready to print.
Data	The printer is processing information.
Attention	Action is required. See the control panel display for an associated message.




Control panel buttons


Button	Function
Cancel Job	<ul style="list-style-type: none"> • Cancels the print job that the printer is processing, clears the paper path, and clears any continuable errors associated with the canceled job. The time that it takes to cancel depends on the size of the print job. (Press it only once.)
Pause/Resume	<ul style="list-style-type: none"> • When the printer is processing a print job, pauses the print job. • When the printer is paused, resumes printing or returns the printer to the Ready state. • Exits the menus or Help.
 (Select)	<ul style="list-style-type: none"> • Opens the menus. • In the menus, selects the menu item currently highlighted. • Finishes a print job that is waiting for a form feed. • Clears a continuable error, or shows the options for resolving the continuable error.
 (Back Arrow)	<ul style="list-style-type: none"> • Returns to the previous level of menus or to the previous numeric entry. • Exits Help. • Exits the menus if pressed for one full second or more.

Button	Function
 (Up Arrow)	<ul style="list-style-type: none"> • Navigates to the previous item on the current menu. • For numeric values, increases the value to the next increment. If the button is held down for more than one second, the value increases rapidly. • In Help, scrolls up to the previous four lines of the current topic (if any).
 (Down Arrow)	<ul style="list-style-type: none"> • Navigates to the next item on the current menu. • For numeric values, decreases the value to the previous increment. If the button is held down for more than one second, the value decreases rapidly. • In Help, scrolls down to the next four lines of the current topic (if any).
 (Help)	<ul style="list-style-type: none"> • Shows additional Help for the message currently displayed. (Not all messages have additional Help topics.) • Exits Help.

Using the printer Help (?) system

This printer features a Help system at the control panel that provides instructions for resolving most printer errors. Some Help topics include animations that appear on the printer control panel display to show how to resolve an error.

To view Help for a message (if available), press  (Help). If the Help topic is longer than four lines, use  (Up Arrow) or  (Down Arrow) to scroll through the entire topic.

To exit the Help system, press  (Help) again.








Printing and changing control panel menus

To see the current settings for the menus and items available at the control panel, print a control panel menu map. Store the menu map near the printer for reference.





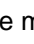
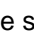




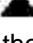
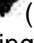
NOTE: For a complete list of menu items and possible values, see the printer's *User Guide* for control panel menus.

Certain menu options appear only if the associated tray or accessory is installed. For example, the EIO menu appears only if an EIO card is installed.

To print a control panel menu map

1. Press  (Select) to open the menus.
2. Use  (Up Arrow) or  (Down Arrow) to scroll to INFORMATION, and then press  (Select).
3. Use  (Up Arrow) or  (Down Arrow) to scroll to PRINT MENU MAP, and then press  (Select).

To change a control panel setting

1. Press  (Select) to open the menus.
2. Use  (Up Arrow) or  (Down Arrow) to scroll to the menu item, and then press  (Select).
3. Some menu items might have several submenus. Use  (Up Arrow) or  (Down Arrow) to scroll to the submenu item, and then press  (Select).
4. Use  (Up Arrow) or  (Down Arrow) to scroll to the setting, and then press  (Select).
Some settings change rapidly if  (Up Arrow) or  (Down Arrow) is held down. An asterisk (*) appears next to the selection on the display, indicating that it is now the default.
5. Press Pause/Resume to exit the menu.

NOTE: Settings in the printer driver and program override control panel settings. (Program settings override printer driver settings.) If access to a menu or item is unavailable, it is either not an option for the printer, or the associated higher-level option has not been enabled. See the network administrator if a function has been locked. ("ACCESS DENIED MENU LOCKED" appears on the printer control panel display.)

This document was created with Win2PDF available at <http://www.daneprairie.com>.
The unregistered version of Win2PDF is for evaluation or non-commercial use only.